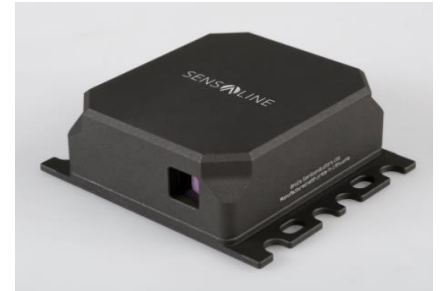


2265,7 nm SensAline Laser

Product number:	SAL22657-01
Package:	Collimated output cerakote coated aluminium case



Specifications

Physical properties*

Height	mm	27
Width	mm	79
Length	mm	68

Laser diode electrical properties

Threshold current	mA	40
Maximum operating current***	mA	500
Maximum operating voltage***	V	1,55

Optical properties

Peak output power @ 200 mA	mW	16,84
Optical cavity length	mm	15
Gain chip resonator length	mm	1
Cavity free-spectral range	nm	0,2
Gain-chip free-spectral range	nm	0,8

Spectral properties

Wavelength tuning	nm/mA	~0,005
Wavelength tuning	nm/K	~0,55
Wavelength tuning	nm/V	~0,0025
Current MHF tuning	GHz	~3
Piezo MHF tuning	GHz	~20

Beam parameters

Diameter @ FWHM (X axis @ exit point)	mm	2,46
Diameter @ FWHM (Y axis @ exit point)	mm	1,6
Divergence @ FWHM (X axis)	deg	0,43
	mrاد	7,50
Divergence @ FWHM (Y axis)	deg	1
	mrاد	17,45

*For detailed information, please see the technical drawing.

****Exceeding 200 mA will lead to additional coupling with more cavity modes and possibly less stable operation.**

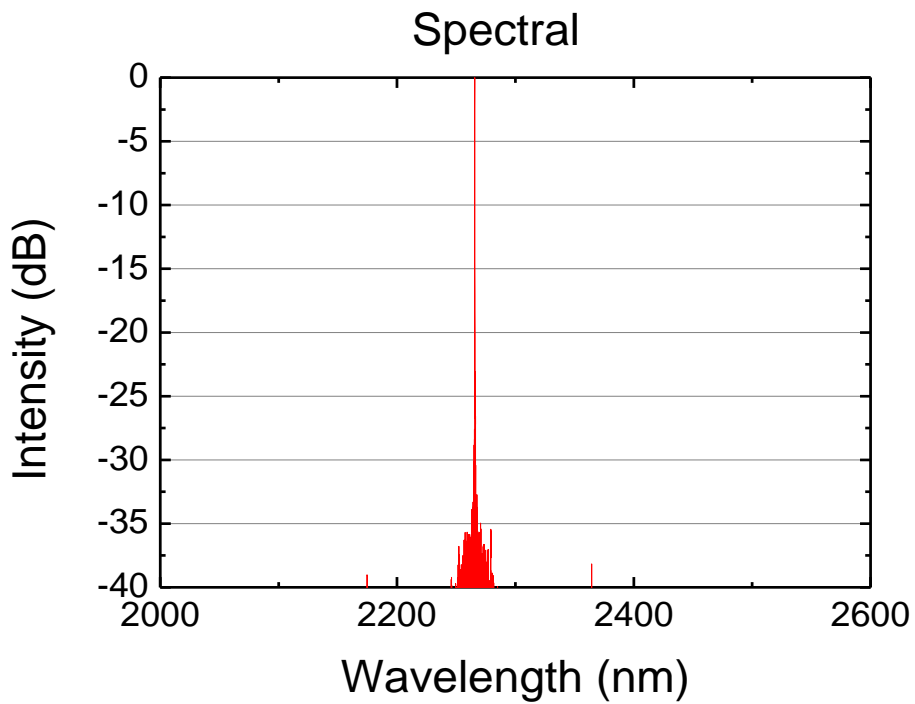
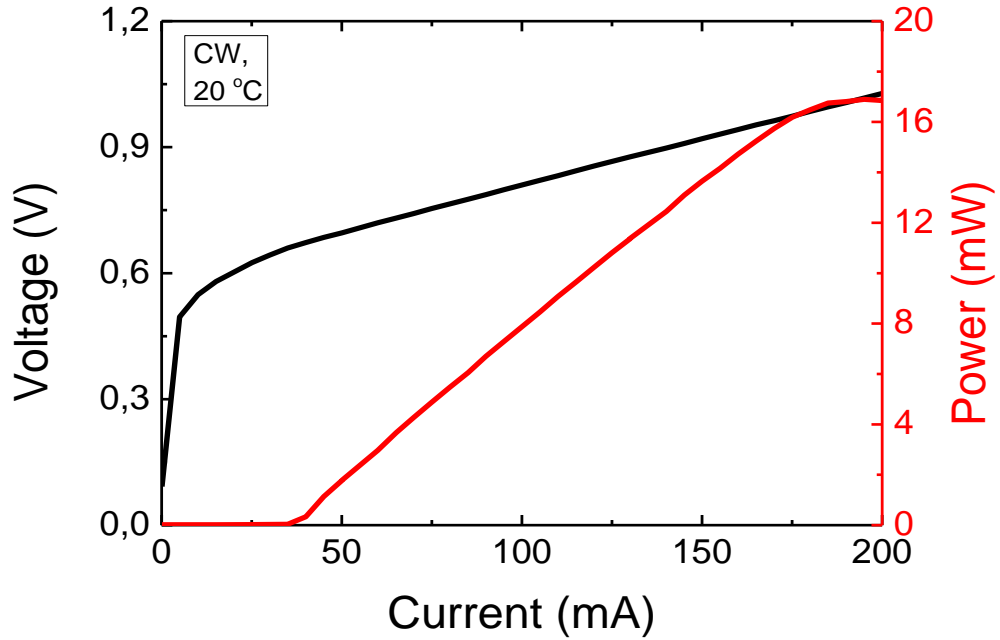


ISO 9001

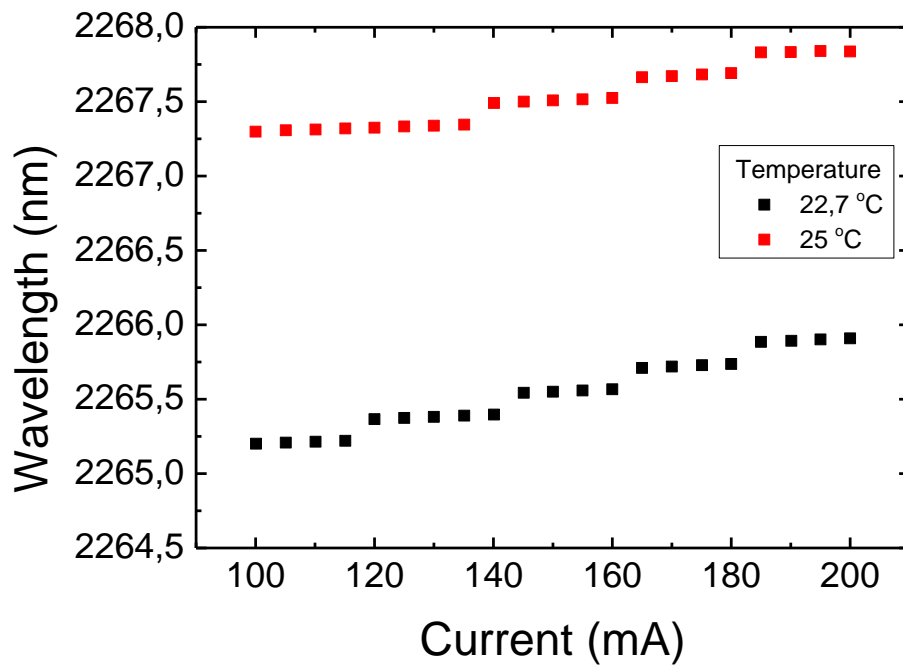
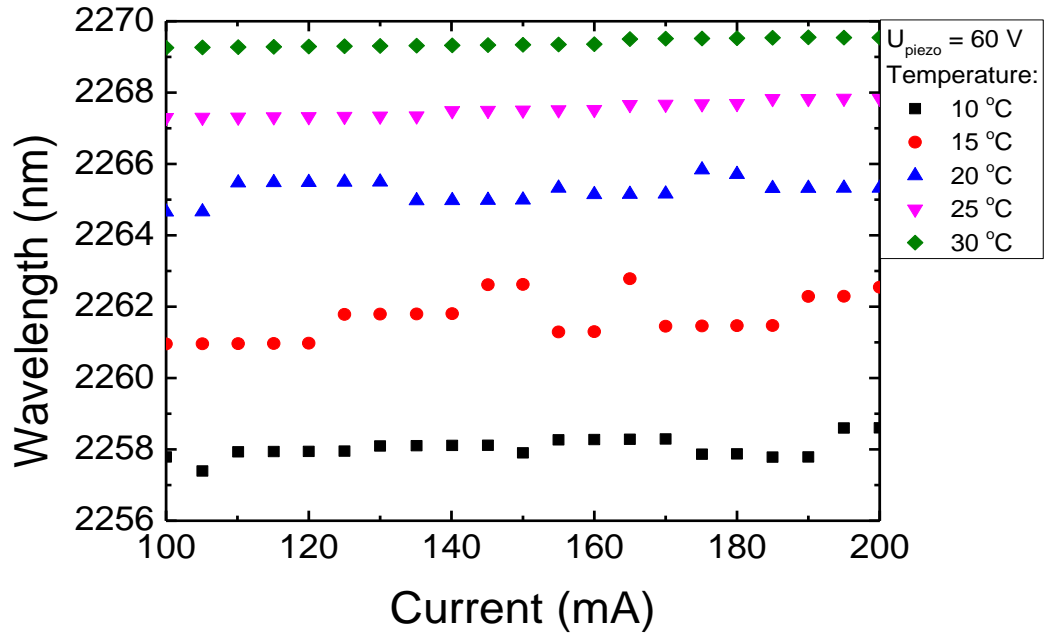
BUREAU VERITAS
 Certification

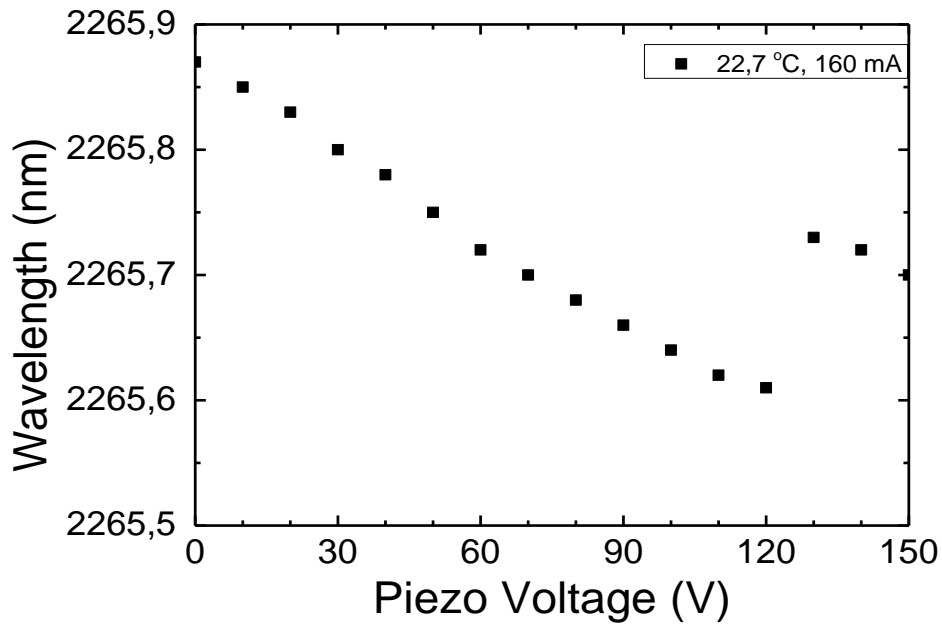


Performance plots

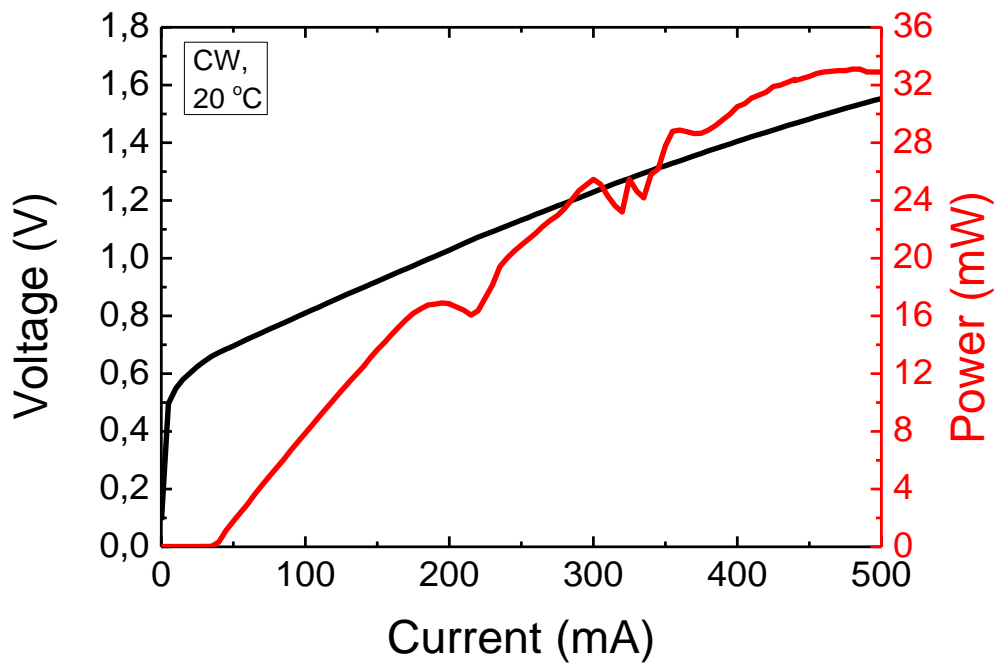


Spectral tuning

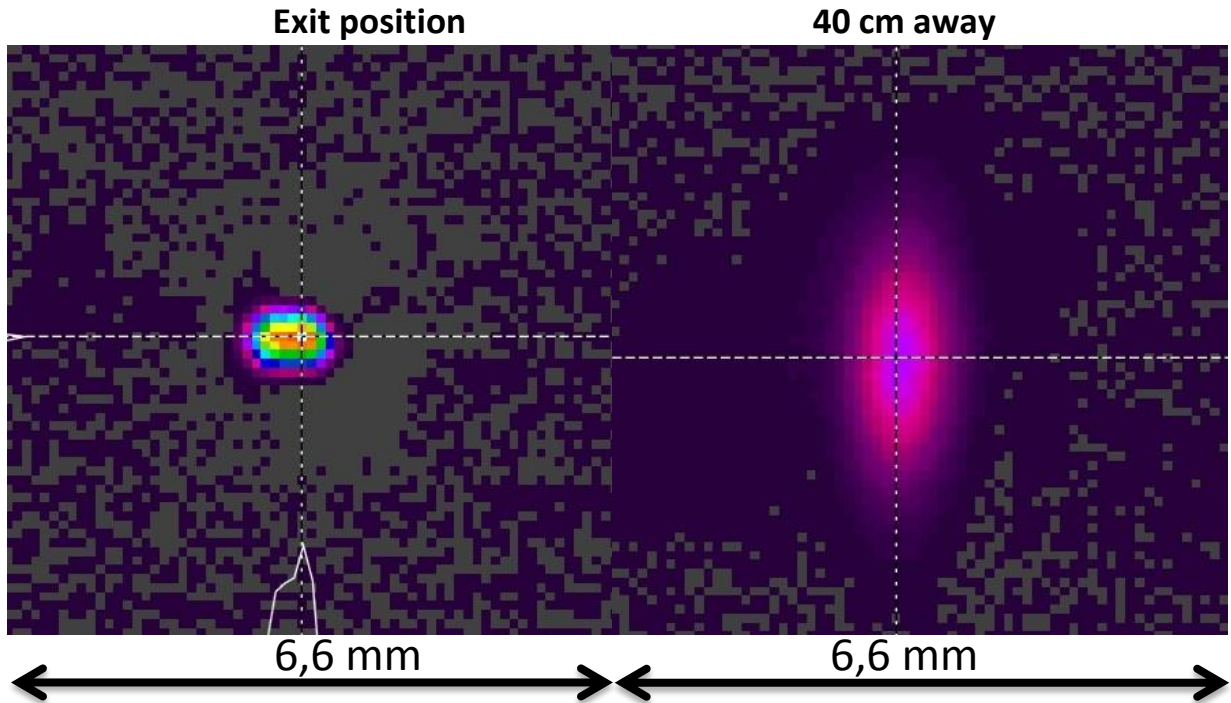




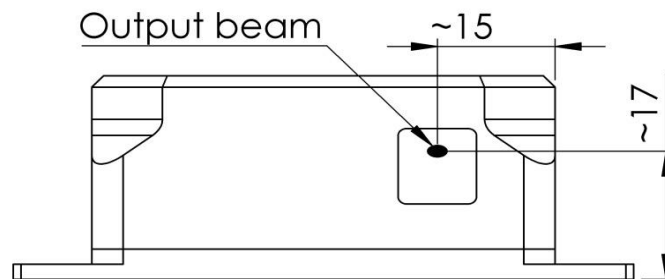
Performance plots



Beam profile

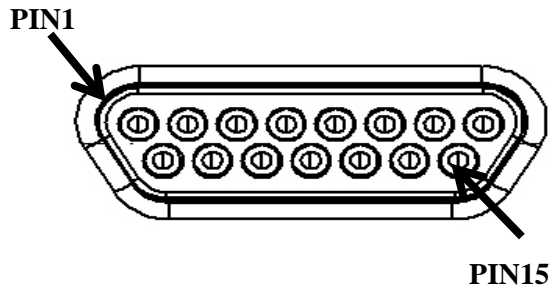


Beam output position



Connector

15-pin Micro-D connector, Molex part no. 83612-9020



PIN1: TEC +
PIN2: TEC +
PIN3: Sensor
PIN4: Sensor
PIN5: Laser Drive +
PIN6: TEC -
PIN7: TEC -
PIN8: NC
PIN9: NC
PIN10: Laser Drive -
PIN11: NC
PIN12: NC
PIN13: NC
PIN14: NC
PIN15: NC

Suitable connector: Molex part no. 83422-9007

For piezo control SMA connector is used

Component	Max Voltage	Max Current
LD TEC	3,4 V	2 A
Piezo element	150 V	-

Temperature sensor: 10 k Ω thermistor. Part no. MC65F103A



